

THE RECIPE TO SUCCESS

35 HUDSON YARDS

35 HUDSON YARDS, NEW YORK, NY 10001

72 Floors / 1,039 ft / 461,679 sq.ft. of curtainwall

OWNER

Related Companies

ARCHITECT

Skidmore, Owings &
Merrill

GENERAL CONTRACTOR

Related Construction

PHOTOGRAPHS

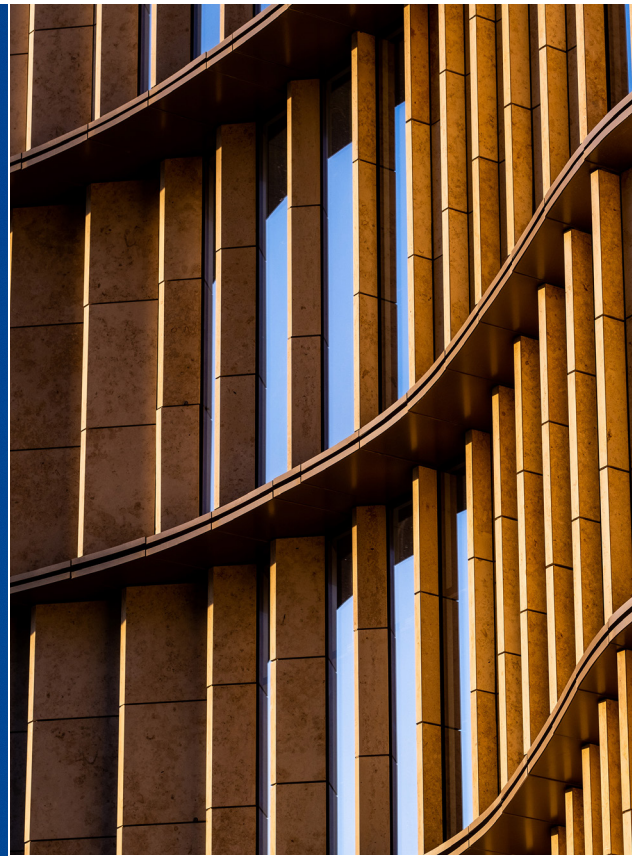
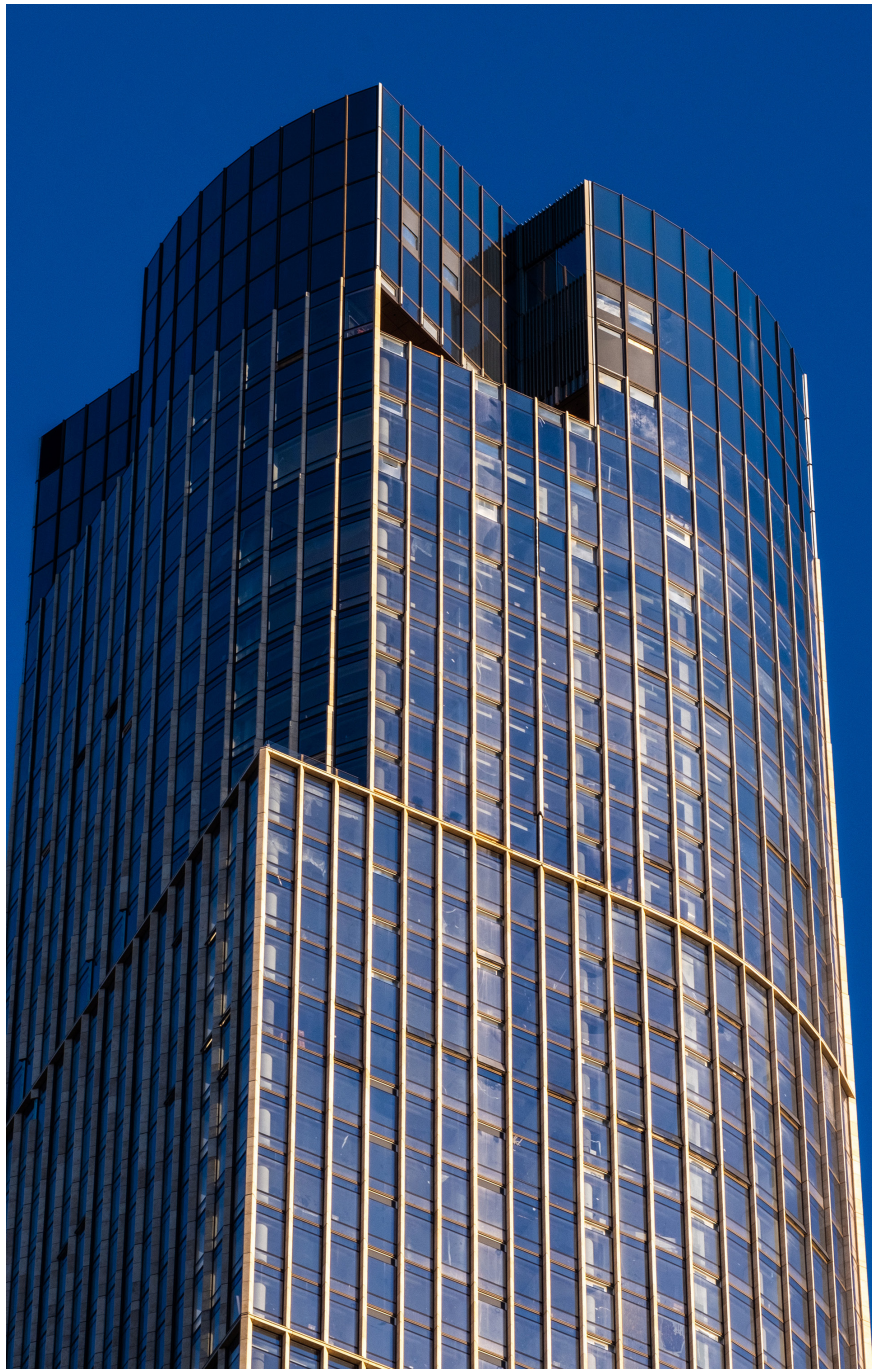
Torsten Zech

35 Hudson Yards is located at the southeast corner of 33rd street and 11th avenue. The 1.1 million sq-ft mixed use tower, designed by David Childs and Skidmore, Owings & Merrill, stands over 1,000 ft tall with 72 stories, and is the tallest residential building at Hudson Yards.

The Jura limestone fins, sourced from a Bavarian quarry in Kaldorf Germany, provides a unique and timeless distinction to the building's facade. Argon-filled IGU's, composite plastics and thermally broken aluminum framing provides an energy efficient facade with 6-ft wide, floor-to-ceiling vision glass. New Hudson Facades partnered closely with SOM early in the design process to deliver a facade of unparalleled design, performance and aesthetic.

"Early engagement in the design process and a collaborative spirit are key ingredients to a successful partnership between design and fabrication. New Hudson Facades input on geometry optimization and engineering during the design process in parallel with input on schedule, cost, shipping, installation, and fabrication allowed the 35 Hudson Yards project to reach its greatest design potential."

— NICOLE DOSSO, FORMER
TECHNICAL DIRECTOR, SKIDMORE,
OWINGS & MERRILL



“Early engagement in the design process and a collaborative spirit are key ingredients to a successful partnership between design and fabrication.”

NICOLE DOSSO, SKIDMORE, OWINGS & MERRILL

