



THE HUB FOR CLINICAL
COLLABORATION AT CHOP

CHILDREN'S HOSPITAL OF PHILADELPHIA

3500 CIVIC CENTER BLVD, PHILADELPHIA, PA 19104

17 Floors / 375 ft / 185,019 sq.ft. of curtainwall

DESIGN ARCHITECT

Perkins & Will

PHOTOGRAPHS

Torsten Zech

GENERAL CONTRACTOR

Turner Construction

Company

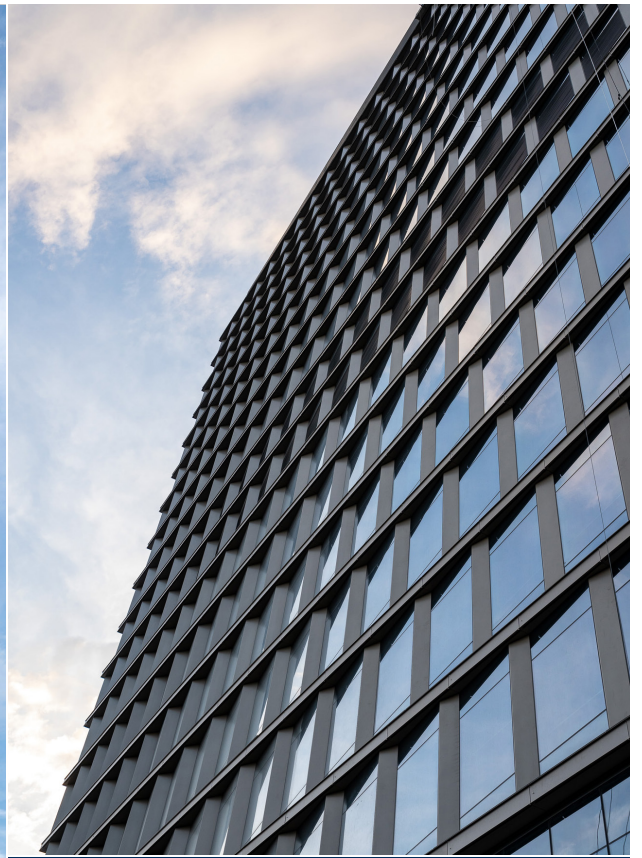
As New Hudson Facades' first Philadelphia project, Children's Hospital of Philadelphia's (CHOP) newest building, "The Hub", made a statement within the medical community.

CHOP is ranked among the best children's hospitals in the U.S., according to US News and World Report. The project aimed to redefine the image and accessibility of medical care for children.

"These were extremely complicated panels in terms of both engineering and installation, less due to geometry and more due to the extreme volume of components," related an NHF engineer. "We achieved the design vision of simplicity by moving all of the complexity to the inside of the frame so that even with 1,400 panels, the façade is a clean canvas that captures and reflects different qualities of light as the day and season changes."

On a busy, existing medical campus, installation had to be completed at night. Additionally, the units were too large to install from inside the floors. They needed to lift the units directly off the truck and set them with the tower crane. Therefore, the team eliminated any secondary moving of materials once on site in order to avoid unwanted obstacles.

WWW.NEWHUDSONFACADES.COM



“Working on the CHOP project with NHF was a pleasant experience from the start of the Design Assist process all the way through final installation. The NHF team was highly innovative in the design, fabrication, and installation of this very complicated curtain wall project.”

JOSEPH MAGDAGHIELE, SENIOR PROJECT MANAGER,
THRONTON TOMASETTI

